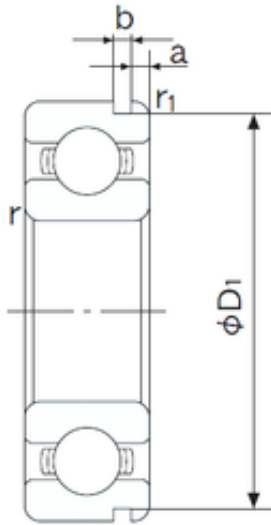




## Shandong Zhongyue Precision Bearing C...



20 mm x 47 mm x 14 mm NACHI 6204N deep groove ball bearings

Bearing No. 6204N

6204N Bearing 2D drawings and 3D CAD models

Size	20x47x14 mm
Bore Diameter	20 mm
Outer Diameter	47 mm
Width	14 mm
d	20 mm
D	47 mm
B	14 mm
C	14 mm
a	2.46 mm
b	1.35 mm
r min.	1 mm
r1 min.	0.5 mm
D1	44.6 mm
Weight	0.106 Kg
Basic dynamic load rating (C)	12,8 kN
Basic static load rating (C0)	6,6 kN
(Grease) Lubrication Speed	14000 r/min
Bore Type	Cylindrical Bore
Enclosure	Open
Configuration	Single Row
Bore Size	20 mm
Outside Diameter	47 mm
Width	14 mm
Fillet Radius/Chamfer	1 mm
r1	0.5 mm



## Shandong Zhongyue Precision Bearing C...

Groove Width	1.4 mm
Groove Diameter	44.6 mm
a (max)	2.5 mm
Dynamic Load Rating	12,800 N
Static Load Rating	6,600 N
Limiting Speed - Grease	16,000 rpm
Limiting Speed - Oil	18,000 rpm
Factor fo	13.1
Radial Clearance	0.005 to 0.020 mm
da (min)	26 mm
Da (max)	41 mm
Dx (min)	53.5 mm
ra (max)	1 mm
Cy (max)	3.3 mm