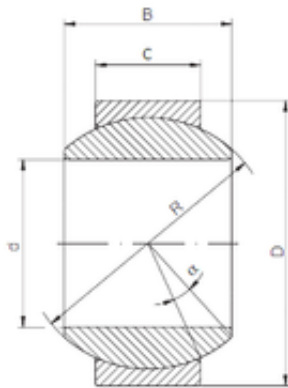




Shandong Zhongyue Precision Bearing C...



20 mm x 42 mm x 25 mm ISO GE 020 HS-2RS
plain bearings

Bearing No. GE 020 HS-2RS

Size	20x42x25 mm
Bore Diameter	20 mm
Outer Diameter	42 mm
Width	25 mm
d	20 mm
D	42 mm
B	25 mm
C	16 mm
R	35,5 mm
Angle	17 °

GE 020 HS-2RS Bearing 2D drawings and 3D CAD models